



SUPPLEMENTAL/BID BULLETIN No. 03

**SUPPLY, DELIVERY AND INSTALLATION OF LED WALL
 (EARLY PROCUREMENT ACTIVITY)**

PB-EPA-2024-006

This Supplemental/Bid Bulletin No. 3 is being issued to all prospective bidders to provide clarification, modifications, and/or amendments to the Bidding Documents and Bid Bulletin No. 02-A, as outlined below. This shall form an integral part of the Bidding Documents.

From:	To:
Deadline for Submission of Bids ➤ November 12, 2024 – 9:30 AM	Deadline for Submission of Bids ➤ November 21, 2024 – 9:30 AM
Opening of Bids ➤ November 12, 2024 – 10:00 AM	Opening of Bids ➤ November 21, 2024 – 10:00 AM
Specifications: Size: 3.84m*2.88m=11.06m2 (6*6=36 pcs) Pixel Pitch: 2.5mm LED Type: SMD2121 Cabinet Size with Back Cover: 640mm*480mm*61.5mm Cabinet Resolution: 256*192 pixels Module Resolution: 128*64 pixels Module Size: 320mm*160mm Total Cabinets: 36pcs (6*6 cabinets) Die-cast aluminum Single-dot Brightness Calibration: Support White Balance Brightness: 600 cd/m2 Standard Color Temperature: 2000K – 9300K Adjustable Contract Ratio: 5000:1 Refresh Rate: 4200Hz Power Supply Input Voltage: AC200-240V, Frequency 47-63Hz Frame Changing Frequency: 60Hz Drive Mode: Constant Current Drive/32 Scan Processing Depth: 12-14 Bit Video Support: 2K HD, 4K UHD	Specifications: Size: 3.84m*2.88m=11.06m2 (6*6=36 pcs) Pixel Pitch: 2.5mm LED Type: SMD2121 Cabinet Size with Back Cover: 640mm*480mm*61.5mm Cabinet Resolution: 256*192 pixels Module Resolution: 128*64 pixels Module Size: 320mm*160mm Total Cabinets: 36pcs (6*6 cabinets) Die-cast aluminum Single-dot Brightness Calibration: Support White Balance Brightness: 600 cd/m2 Standard Color Temperature: 2000K – 9300K Adjustable Contract Ratio: 5000:1 Refresh Rate: 4200Hz Power Supply Input Voltage: AC200-240V, Frequency 47-63Hz Frame Changing Frequency: 60Hz Drive Mode: Constant Current Drive/32 Scan Processing Depth: 12-14 Bit Video Support: 2K HD, 4K UHD





Total Module: 216 pcs
 Maintenance: Full Front

Control System:

Sending Card: 1 pc
 Receiving Card: 36 pcs
 Operating System: 1 pc
 Video Processor: 1 pc, supports input resolution up to 1920*1200@60Hz, 10bit/8bit HD video source, the loading capacity: 2.3 million pixels
 Laptop: 1 pc, i7 16GB RAM with 4GB video card
 Electrical Equipment: 1 lot, Power Distribution Box
 Framing: 1 lot, Structural Framing & Electrical Wiring
 Others: 1 lot, Delivery, Installation, Commissioning & Training
 AVR: 10KVA

Accessories and Spare Parts:

Module: 4 pcs
 Receiving Card: 2 pcs
 PSU: 2 pcs

General Items: 2 years standard free warranty for both service and parts, including onsite support and quarterly maintenance

Spare Parts: Provide spare parts free of charge

Delivery Lead Time: 75 days after receipt of Notice to Proceed

Manufacturer: The product should be from one of the top 10 LED wall manufacturers and include a product certificate. It must be a high-quality LED wall and come with an attached brochure.

Total Module: 216 pcs
 Maintenance: Full Front
 Working Temperature/Humidity Range (°C/RH):
 -20°C up to 45°C / 10%-65%RH

Control System:

Sending Card: 1 pc
 Receiving Card: 36 pcs
 Operating System: 1 pc
 Video Processor: 1 pc, supports input resolution up to 1920*1200@60Hz, 10bit/8bit HD video source, the loading capacity: 2.3 million pixels
 Laptop: 1 pc, i7 16GB RAM with 4GB video card
 Electrical Equipment: 1 lot, Power Distribution Box
 Framing: 1 lot, Structural Framing & Electrical Wiring
 Others: 1 lot, Delivery, Installation, Commissioning & Training
 AVR: 10KVA

Accessories and Spare Parts:

Module: 4 pcs
 Receiving Card: 2 pcs
 PSU: 2 pcs

General Items:

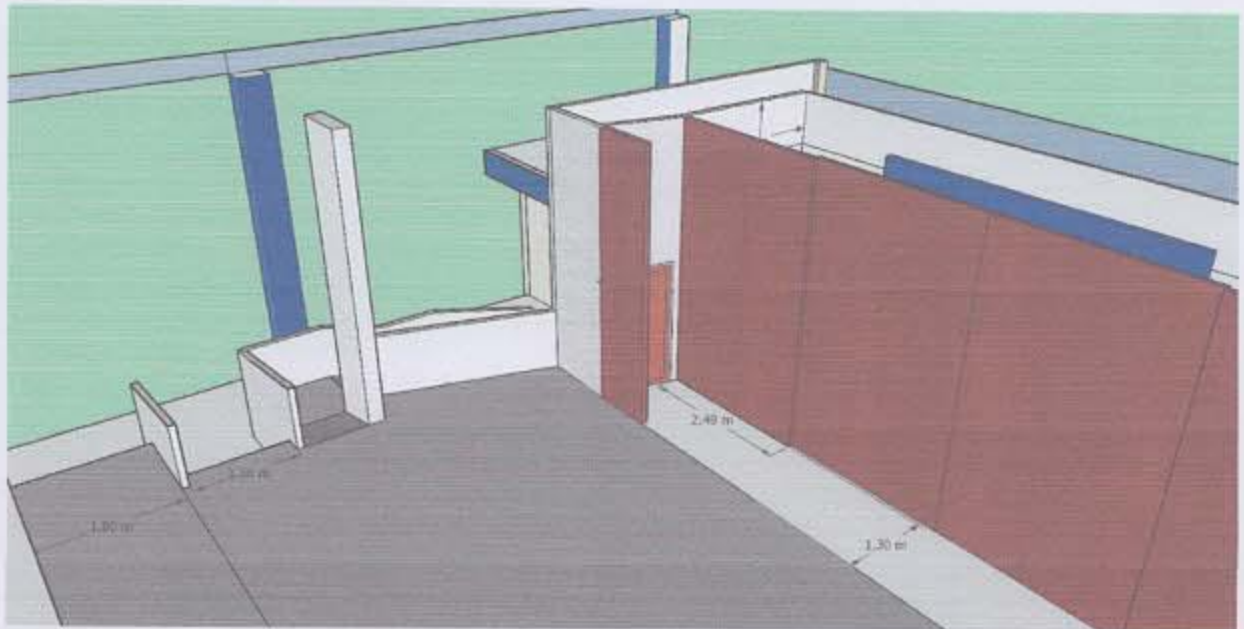
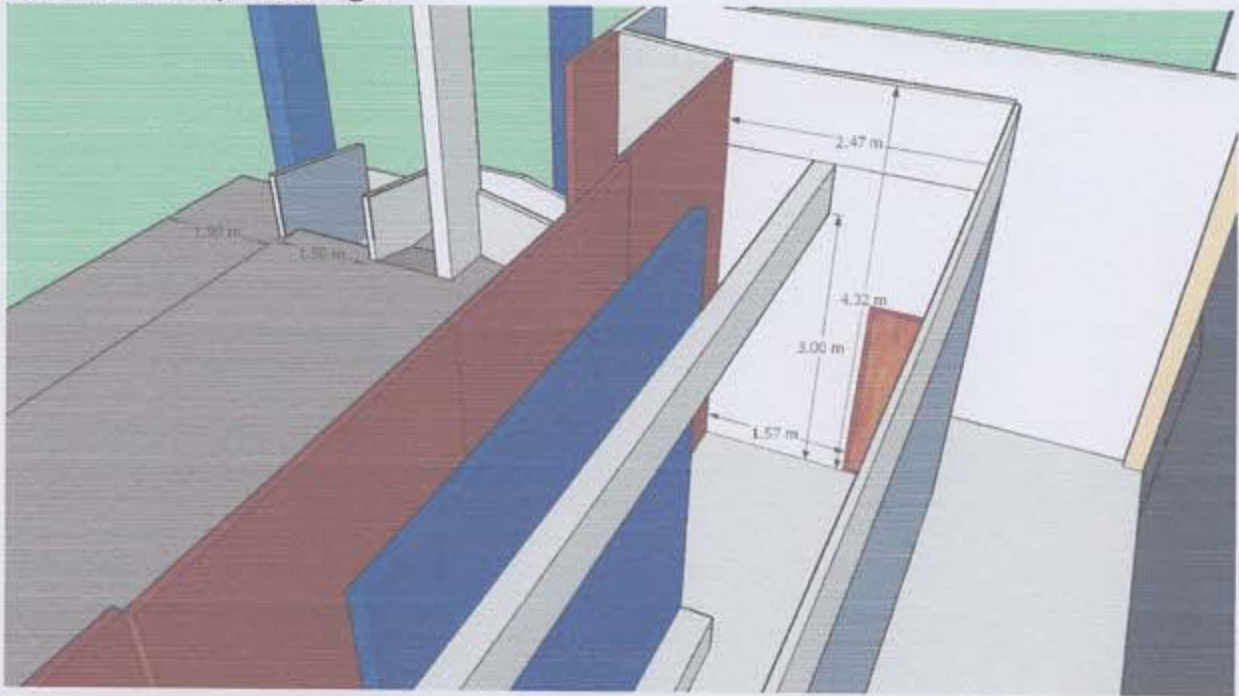
- It must be a high-quality LED Wall and come with an attached brochure.
- 2 years standard free warranty for both service and parts, including onsite support and quarterly maintenance.
- The Supplier must have a Manufacturer Certificate or Authorized Distributor Certificate for LED Wall to be submitted as a post-qualification requirement.

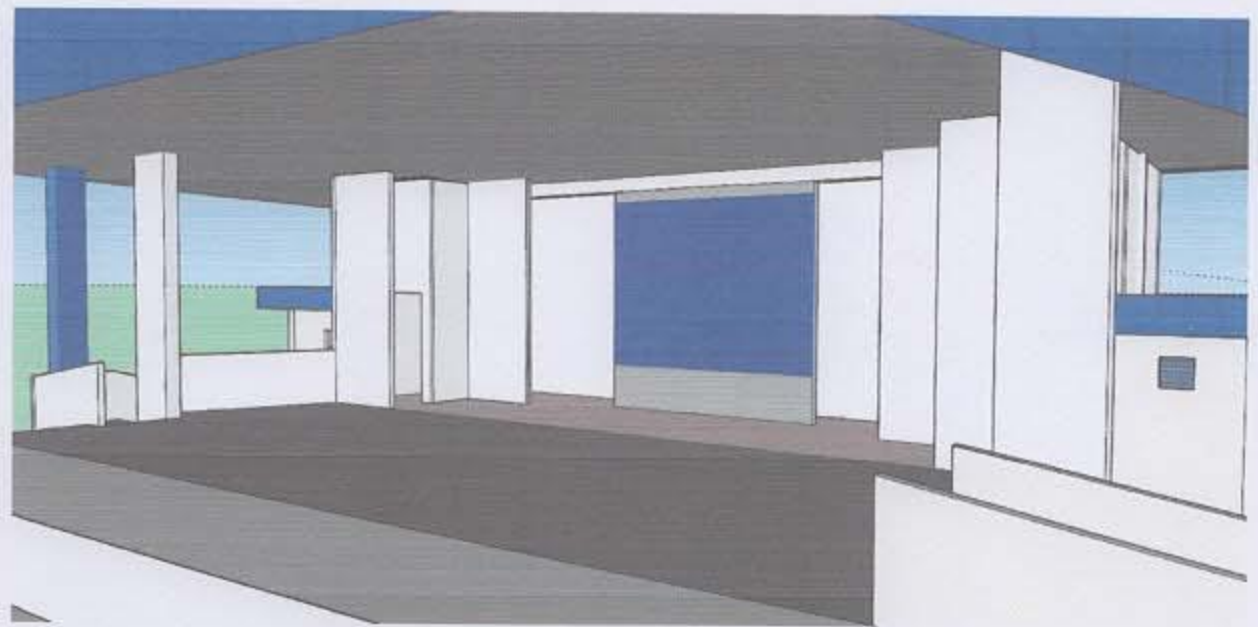
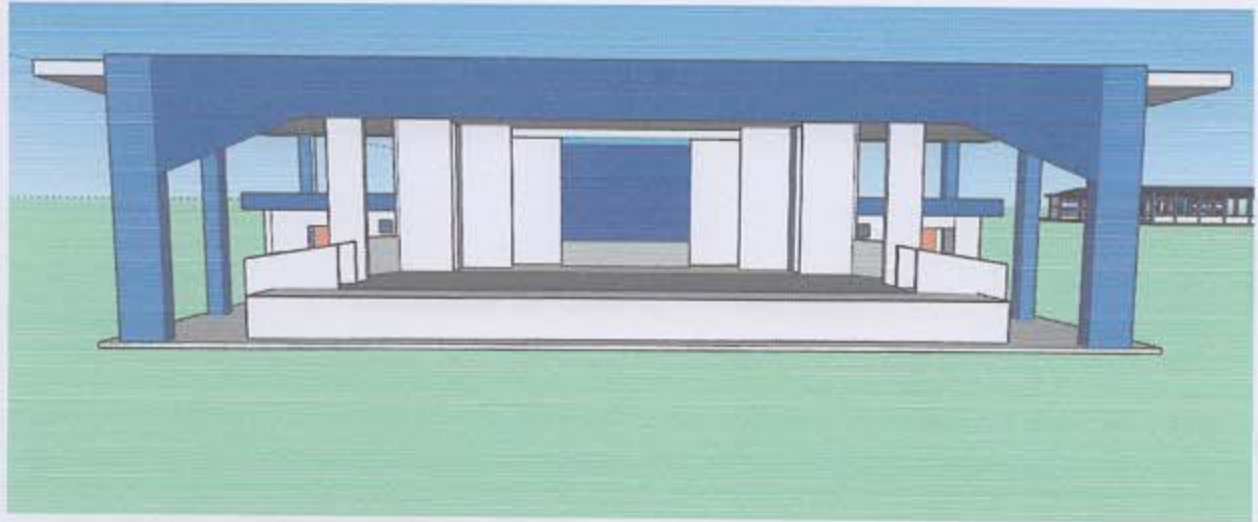
Spare Parts: Provide spare parts free of charge

Delivery Lead Time: 75 days after receipt of Notice to Proceed



Location Plans/Drawings:





This is for the guidance and information of all concerned.


SANTIAGO P. ABREA, PhD

BAC Chairperson

Date: **8 November 2024**